

THE JULIÄN

19 Wyckoff Street Brooklyn, New York

2 BED/1 BATH

WASHER/DRYER IN UNIT

CUSTOM KITCHEN MILLWORK

BLOMBERG APPLIANCES

5" IMPORTED GREY-WASHED
PLANK FLOORS

EMTEK DOOR HARDWARE

9FT CEILINGS

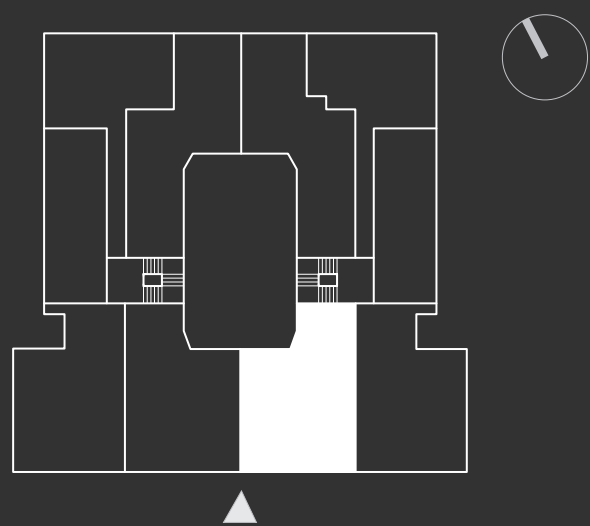
CUSTOM BUILT-IN CLOSETS

USB OUTLETS THROUGHOUT
KITCHEN/BATHROOM

ACCENT LIGHTING

ENERGY EFFICIENT FIXTURES

FIOS READY



WYCKOFF STREET



THE JULIÄN

19 Wyckoff Street Brooklyn, New York

2 BED/1 BATH

WASHER/DRYER IN UNIT

CUSTOM KITCHEN MILLWORK

BLOMBERG APPLIANCES

5" IMPORTED GREY-WASHED
PLANK FLOORS

EMTEK DOOR HARDWARE

9FT CEILINGS

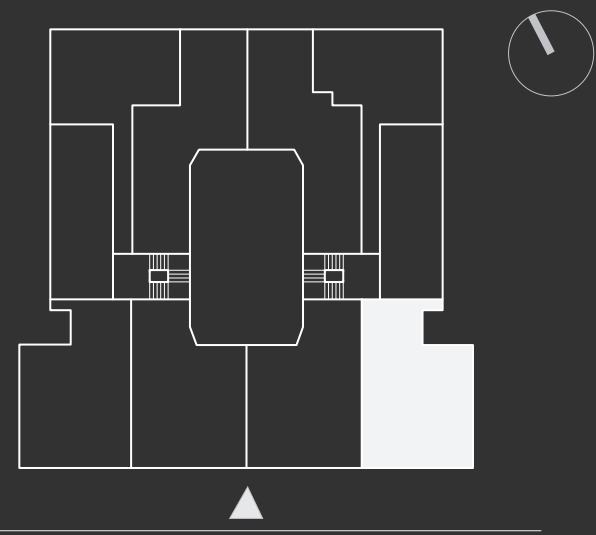
CUSTOM BUILT-IN CLOSETS

USB OUTLETS THROUGHOUT
KITCHEN/BATHROOM

ACCENT LIGHTING

ENERGY EFFICIENT FIXTURES

FIOS READY



WYCKOFF STREET



This floorplan is for illustrative purposes only and is intended to convey the concept and vision for the apartment. Floor plans are intended to give a general indication of the proposed layout only.